

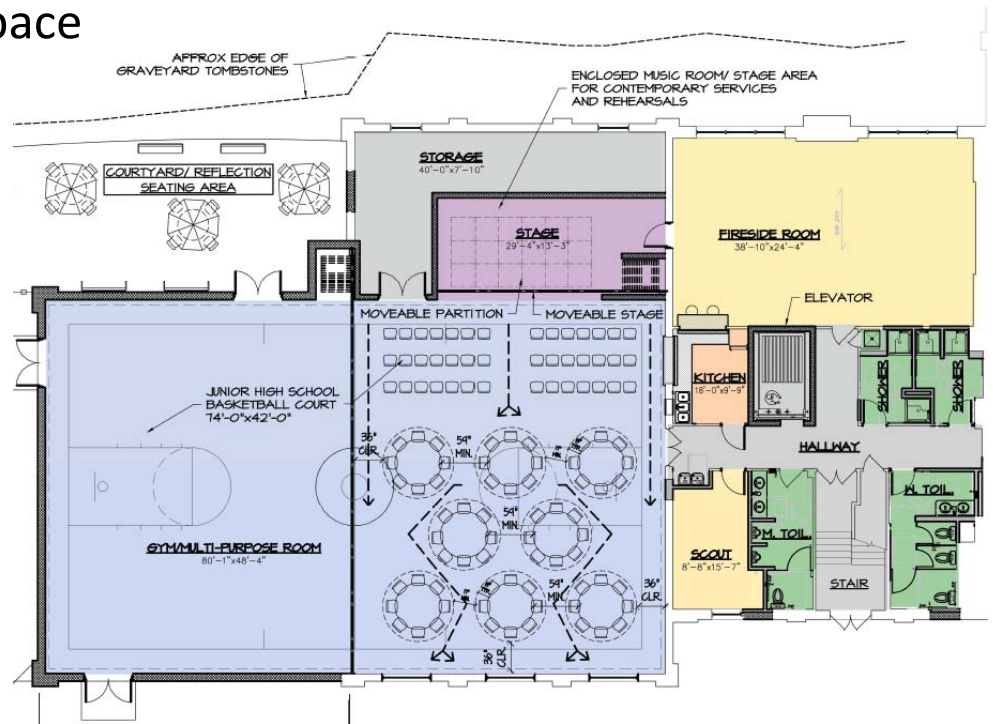


**Lower
Providence**
Presbyterian Church

*Shining the light of Jesus Christ ever brighter from
this hill through love, fellowship, and outreach.*

LPPC Site Master Plan

- In December LPPC's Session approved two projects
 - Improve and expand the parking lot
 - Renovate the lower level program space



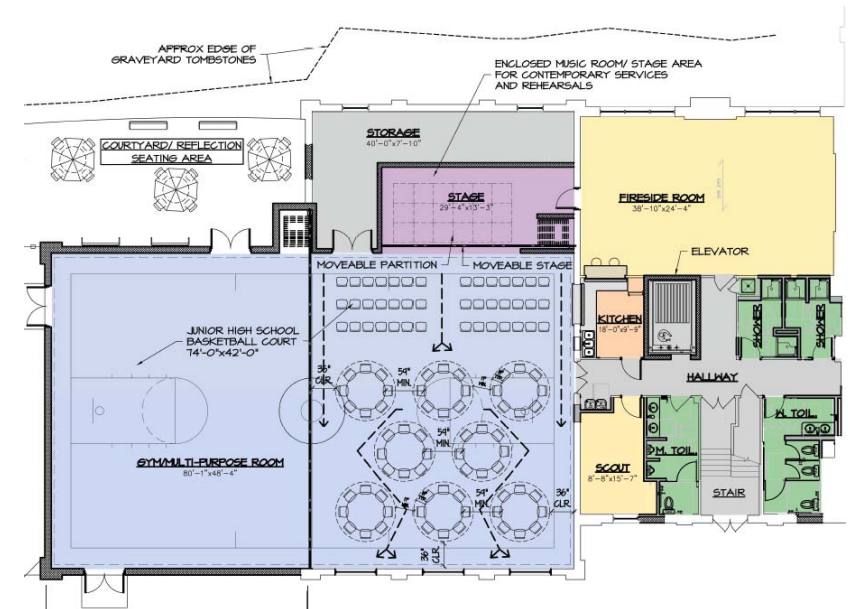
Parking Lot Improvements and Expansion

- ✓ Civil Engineering field surveys are complete
- ✓ LPPC property smaller lots consolidated
- ✓ Major Land Development Plan Waiver received from Lower Providence Township
- ✓ Plans for 42 additional parking spots
- ✓ Improvements estimated at \$430,000



Program Space Renovations

- ✓ Aligns with LPPC's Vision
- ✓ Conceptual drawing reviewed by church staff and Session
- ✓ Renovations estimated at \$1.4M to \$1.7M



Next Steps

- Formation of a building committee
- Engage a consulting firm to perform a fundraising Feasibility Study
- Additional communications, town halls, and briefing sessions will be held with the congregation
- After the Feasibility Study, a congregational vote and Presbytery approval will be required to move forward



Closing Thoughts



- **Matthew 28:18-20** (The Great Commission) Jesus's last words to the disciples were, "All authority in heaven and on earth has been given to me. Go therefore and make disciples of all nations, baptizing them in the name of the Father and of the Son and of the Holy Spirit, teaching them to observe all that I have commanded you. And behold, I am with you always, to the end of the age."
- **Our Vision Statement**, "Shining the Light of Jesus Christ ever brighter from this hill through love, fellowship, and outreach"